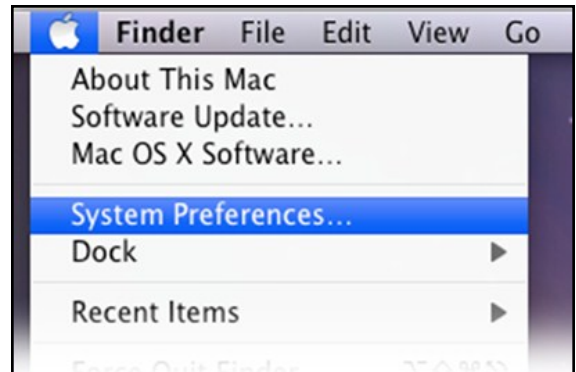


# Mac OS X 10.5 & 10.6: Setting Up a Secured Wired Connection

## Step 1

---

Select the **Apple** menu from the top menu bar and select **System Preferences...**



## Step 2

---

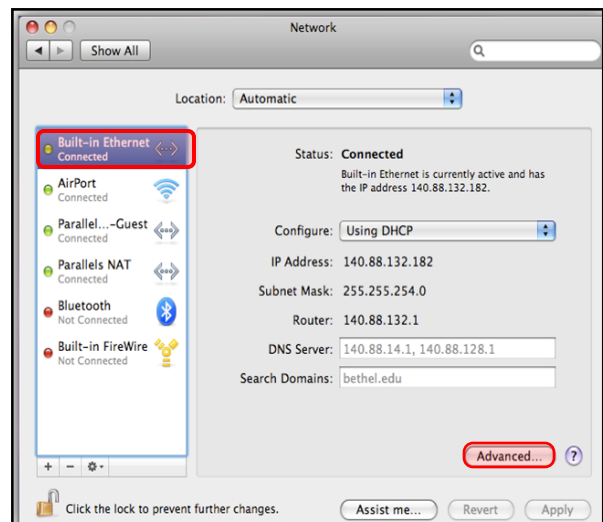
Click the **Network** icon.



## Step 3

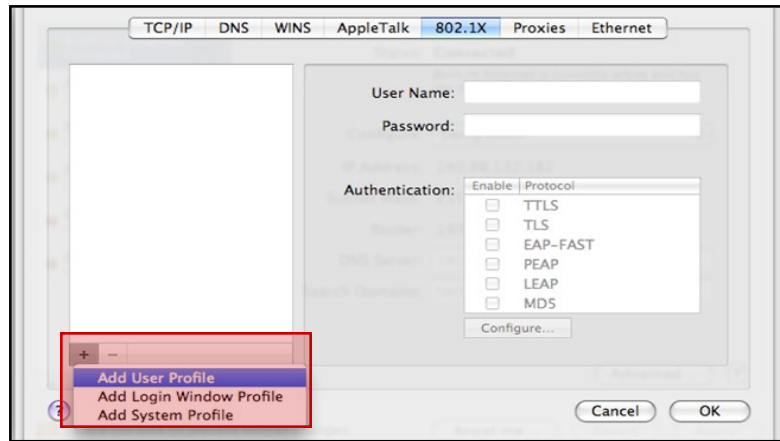
---

Select **Ethernet** and then click the **Advanced...** button in the lower right-hand corner.



## Step 4

Select the **802.1X** tab, then click the **plus sign (+)** and select **Add User Profile**.

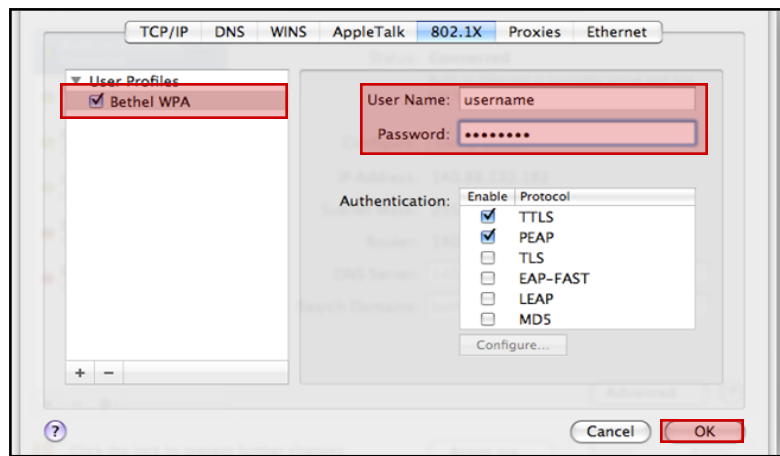


## Step 5

Select the new user profile and rename it (Ex. Bethel WPA). Enter your Bethel Username and Password into the **User Name:** and **Password:** fields.

**\*Note:** Your computer may ask you if you want it to remember your username and password in your keychain. **If you share your computer with other users you should not check this option.**

Then make sure that the checkbox next



## Step 6

Click the **Connect** button next to **802.1X**, then click the **Apply** button and close the network window.

Your computer should now be connected to the Internet.

