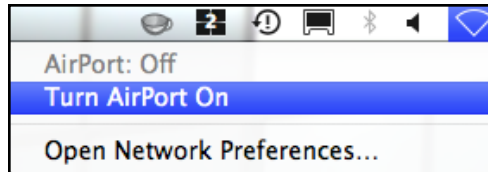


# OS X 10.6: Setting Up a Secure Wireless Connection

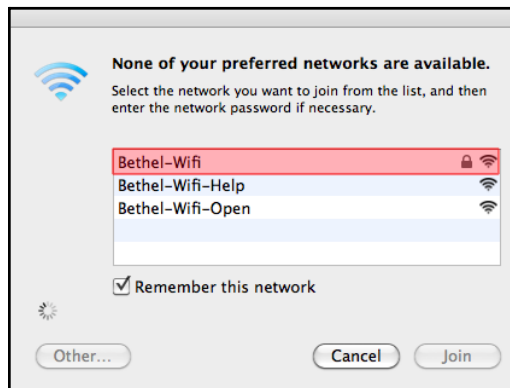
## Step 1

On the Menu Bar, click the **Airport** icon. Turn the Airport On.



## Step 2

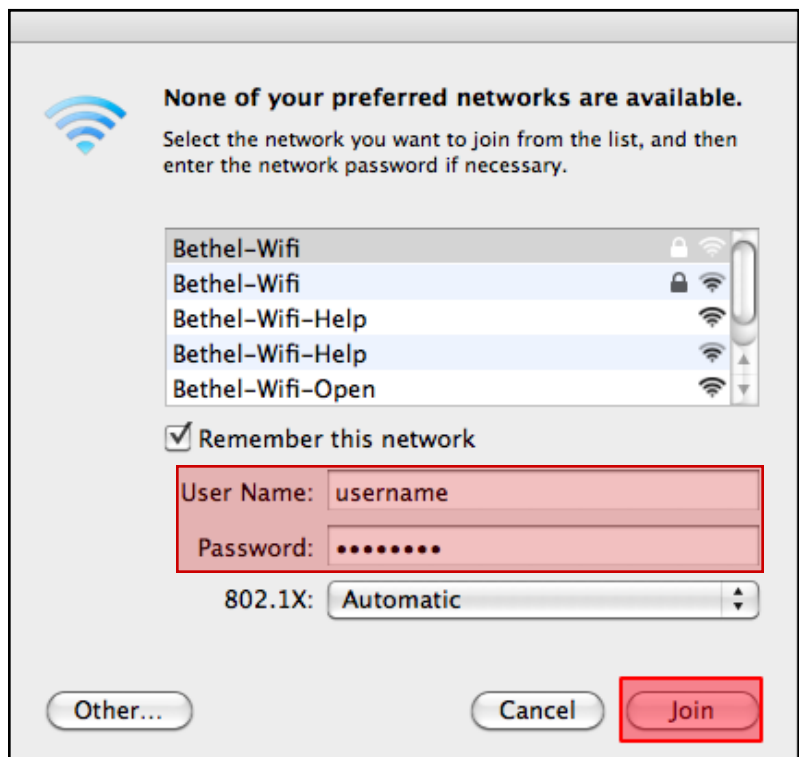
When the Airport is activated, you will be prompted to select a network to join. Select **Bethel-Wifi**.



## Step 3

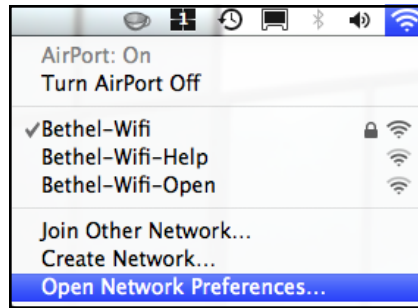
After selecting Bethel-Wifi, enter your **Bethel Username** and **Password** and click **Join**.

By selecting OK, you have established an 802.1x profile on your computer. This step authenticates your computer for accessing Bethel's network, and will allow you to use the internet. It does not, however, save your credentials for future connection to the network. Continue with these steps to save your credentials as part of your 802.1x profile.



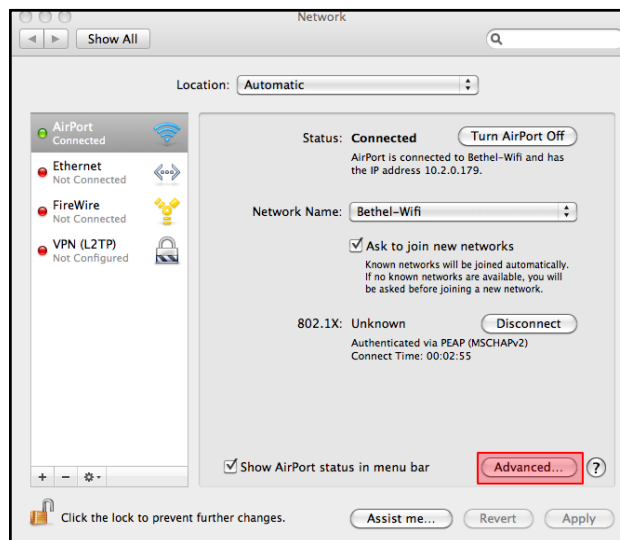
## Step 4

On the Menu Bar, click the **Airport** icon. Select **Open Network Preferences...**



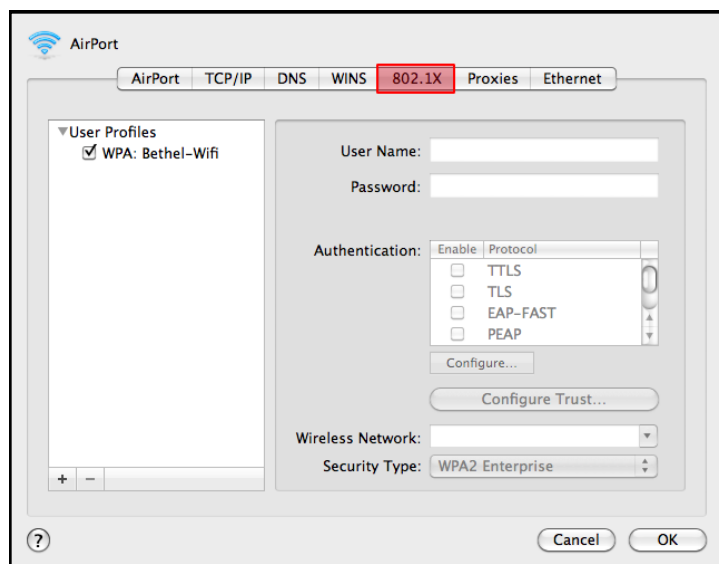
## Step 5

Once in Network Preferences, select **Advanced**.



## Step 6

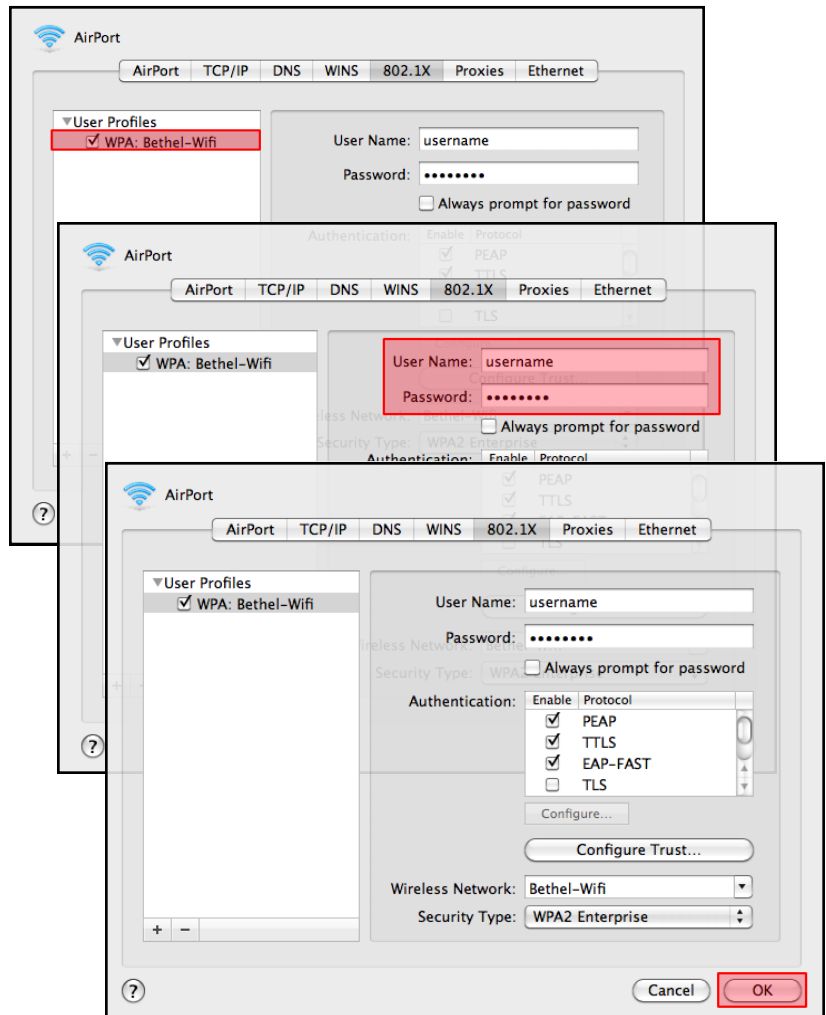
In the advanced options, select the **802.1x** tab along the top.



## Step 7

On the 802.1x tab:

1. Select the profile **WPA: Bethel-Wifi**
2. Enter your **Bethel Username** and **Password** (there will be information already existing in these fields—replace it).
3. Select **OK**.



## Step 8

Click **Apply**.

Your computer should now be connected to the Internet.

