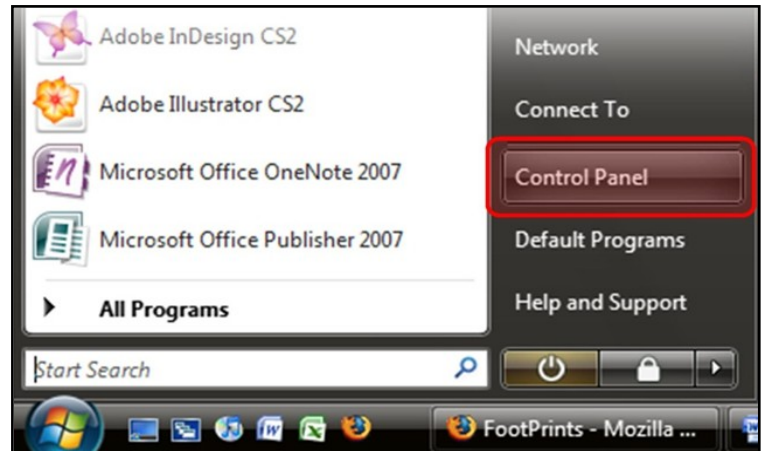


Windows Vista: Setting Up a Secure Wired Connection

Step 1

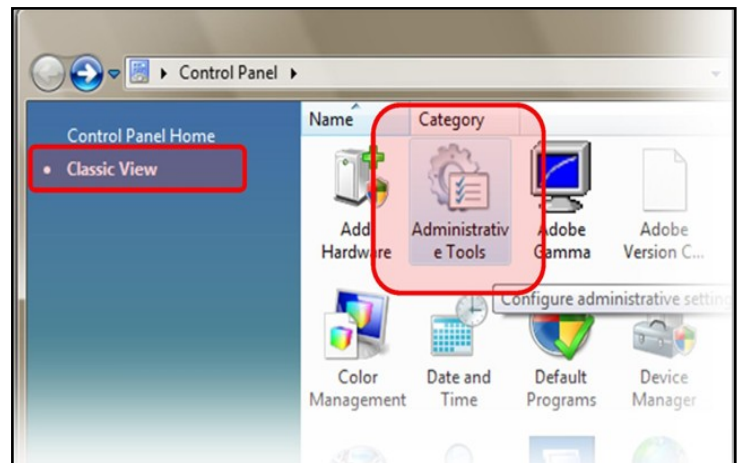
Click [Start](#) and select [Control Panel](#).



Step 2

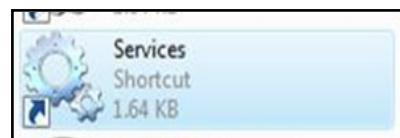
On the left-hand side you should see [Classic View](#) and [Control Panel Home](#). Select and click on [Classic View](#).

Double-click on [Administrative Tools](#).



Step 3

In the window that appears, double-click on [Services](#).



Step 4

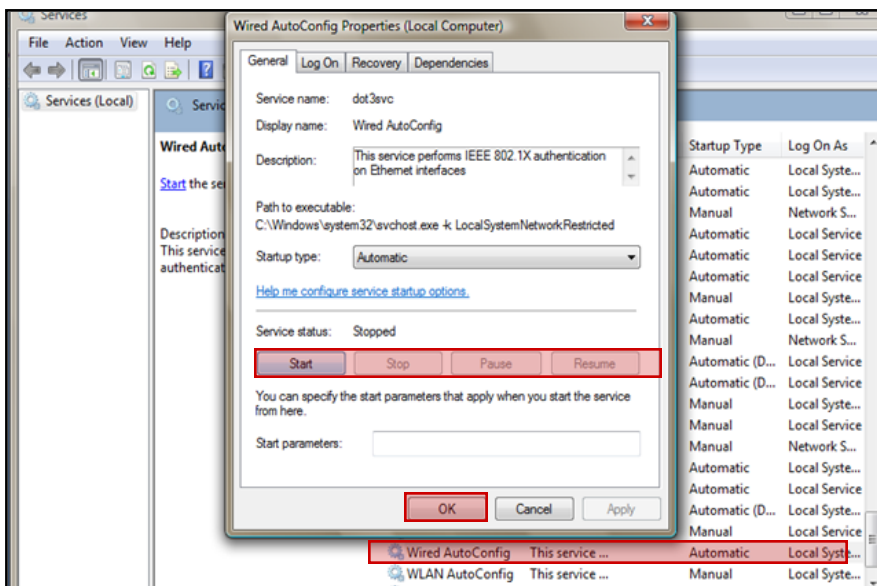
Scroll down to [Wired AutoConfig](#) and double-click on it.

In the Wired AutoConfig Properties window make sure that [Startup Type](#): is set to [Automatic](#). Under [Service Status](#): click the [Start](#) button.

If you are able to click on the Stop or Restart buttons, then the service is already started.

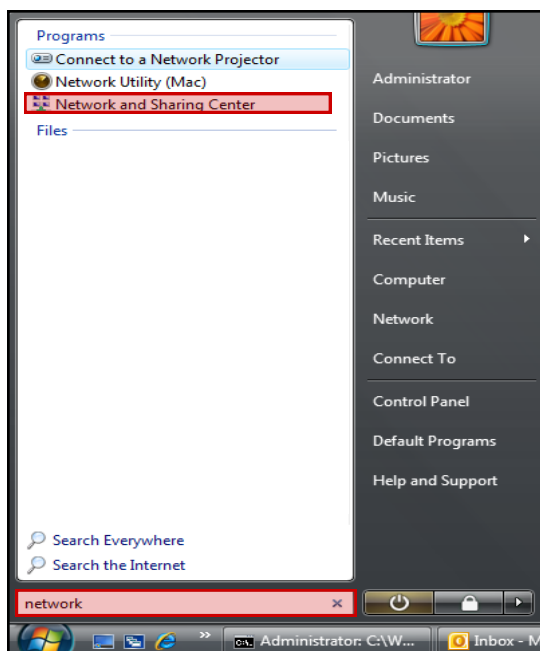
Click [OK](#).

You may now close out of all open windows.



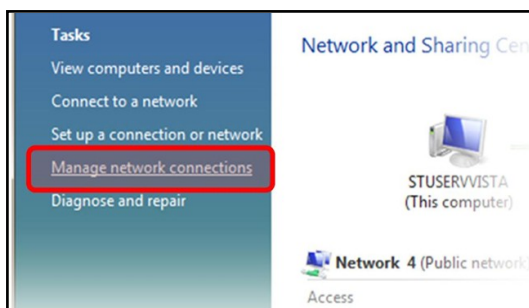
Step 5

Select [Start](#), and type [Network](#) into the search bar.



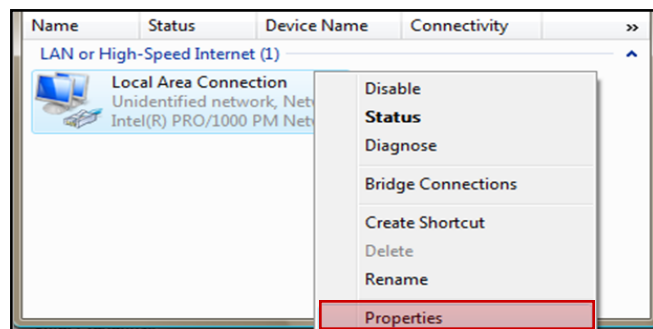
Step 6

On the left-hand side of the window, select [Manage network connections](#).



Step 7

Right-click **Local Area Connection** and select **Properties**.



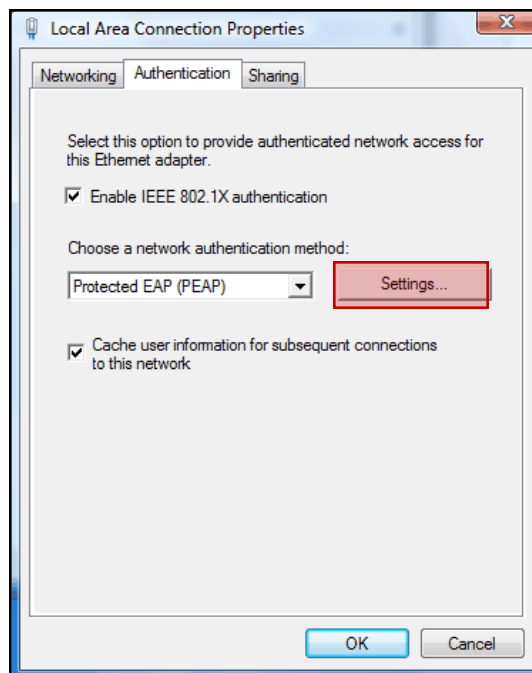
Step 8

Select the **Authentication** tab:

- Make sure **Enable IEEE 802.1x authentication** is checked.
- Under **Choose an authentication method**: make sure **Protected EAP (PEAP)** is selected.
- Check: **Cache user information for subsequent connections to this network**.

***Note:** Checking this box will cause the computer to save your username and password every time you connect. **If you share your computer with other users you should not check this box.**

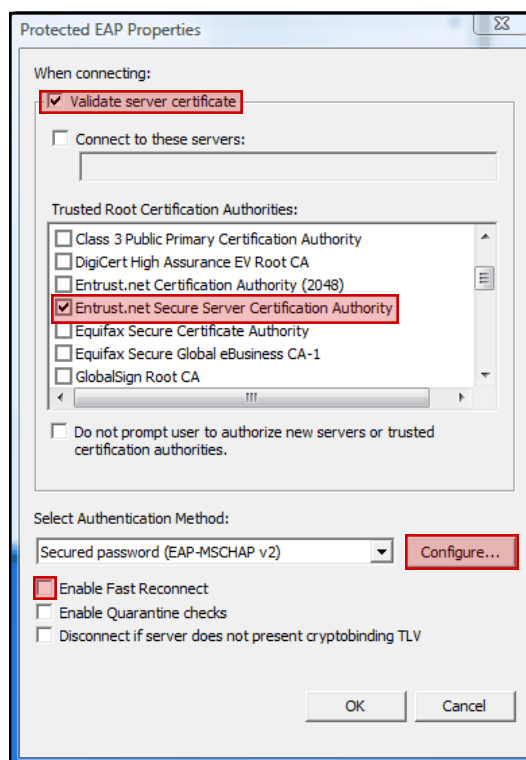
Click **Settings**.



Step 9

In the Protected EAP Properties Window:

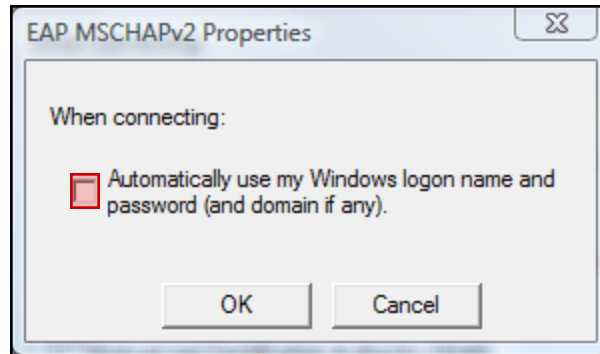
- Check **Validate Server Certificate**.
- Under **Trusted Root Certification Authorities** choose **Entrust.net Secure Server Authority**. (If you see two instances of **Entrust.net Secure Server Authority**, check both boxes.)
- Under **Select Authentication Method** choose **Secured Password (EAP-MSCHAP v2)**.
- Uncheck: **Enable fast reconnect**.
- Click **Configure...**



Step 10

Uncheck: [Automatically use my Windows logon name and password](#), then click **OK**.

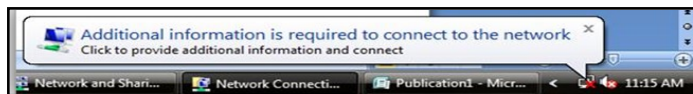
Click **OK** two more times and **close** the remaining Windows.



Step 11

A box will pop-up in the lower right portion of your screen requesting additional information. [Click on it](#).

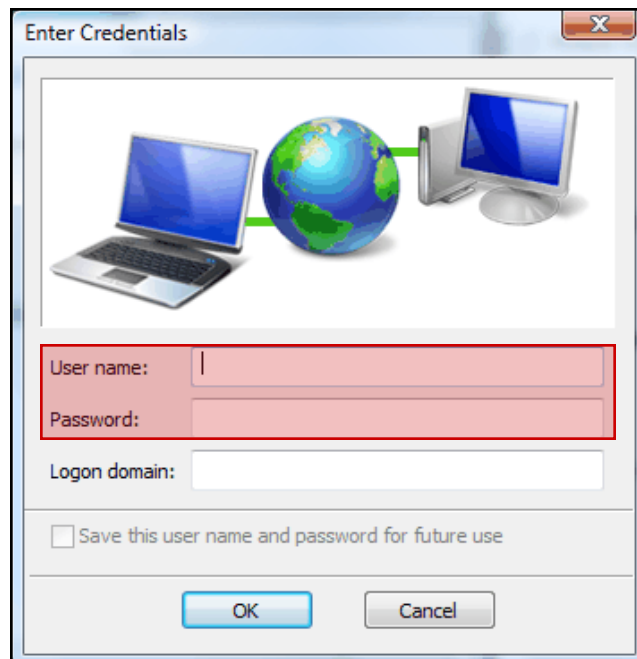
***Note:** It may take a minute or so for this box to appear.



Step 12

In the window that appears, type in your **Bethel Username** and **Password**. Leave the logon domain blank. Click **“OK.”**

Your computer should now be connected to the Internet.



**If you need assistance with this process,
please call the ITS Student Services Help Desk at x6500 - Option 2.**