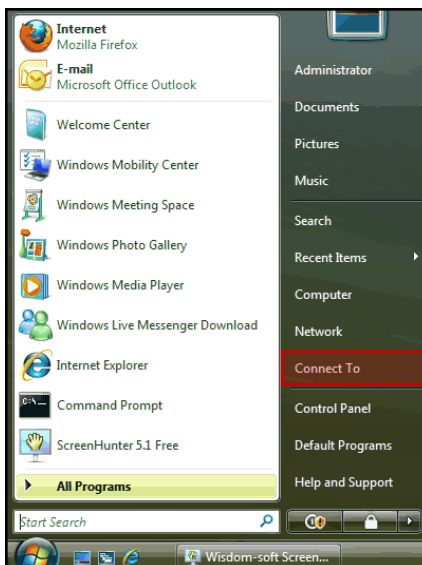


Windows Vista: Setting Up a Secure Wireless Connection

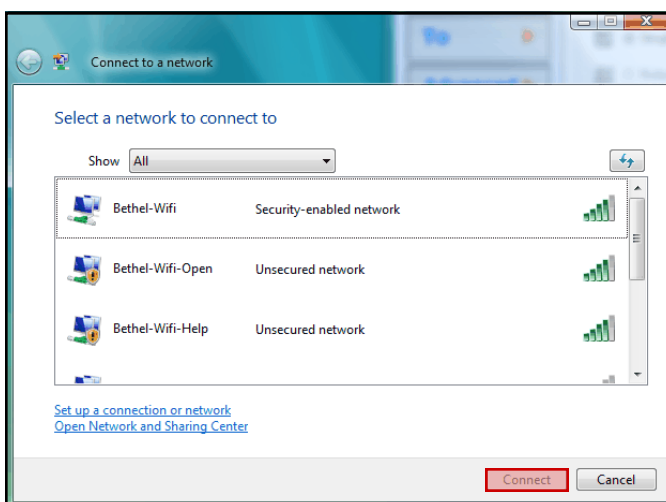
Step 1

Click **Start** and select **Connect To**.



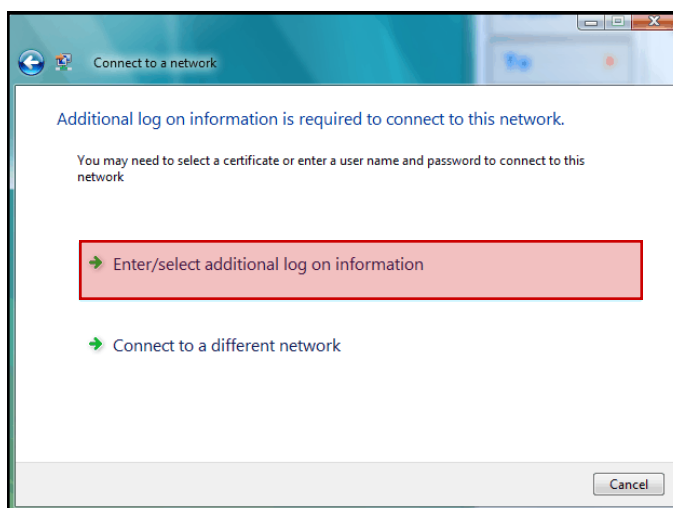
Step 2

In the window that appears, click on **Bethel-Wifi** and choose **Connect**.



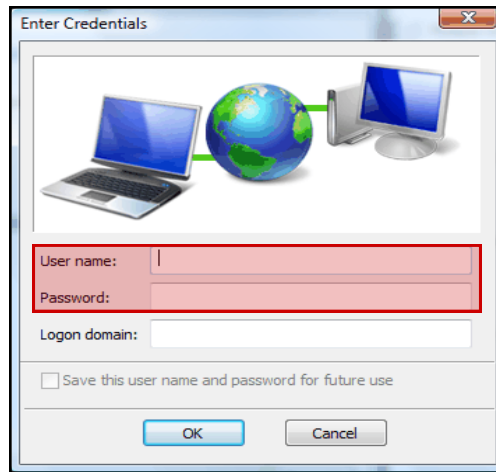
Step 3

In the box that appears, select and click on: **Enter/select additional log on information**.



Step 4

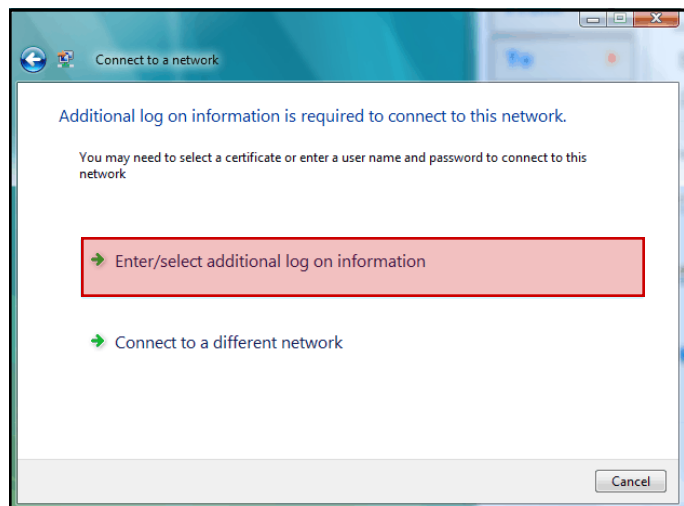
Enter your **Bethel Username** and **Password** and click **OK**.



Step 5

This box will appear again.

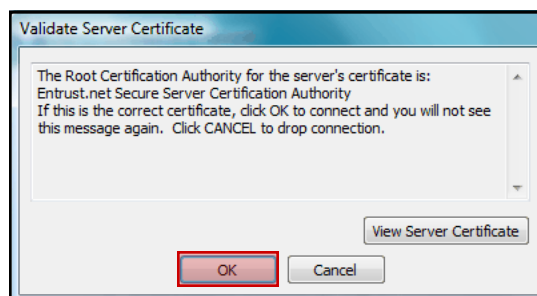
Choose **Enter/select additional log on information** a second time.



Step 6

A window will appear asking you to **Validate Server Certificate**. Choose **OK** to validate.

Your computer should now be connected to the Internet.



**If you need assistance with this process,
please call the ITS Student Services Help Desk at x6500 - Option 2.**