

Windows XP: Setting Up a Secure Wired Connection

***Note:** If you have Service Pack 2 or 3, skip to **Page 4** and begin with **Step 7**. If you do not know which Service Pack is installed on your computer, please refer to **Determining My WinXP Service Pack on Page 41**.

Step 1

Click **Start** and select **Control Panel**.



Step 2

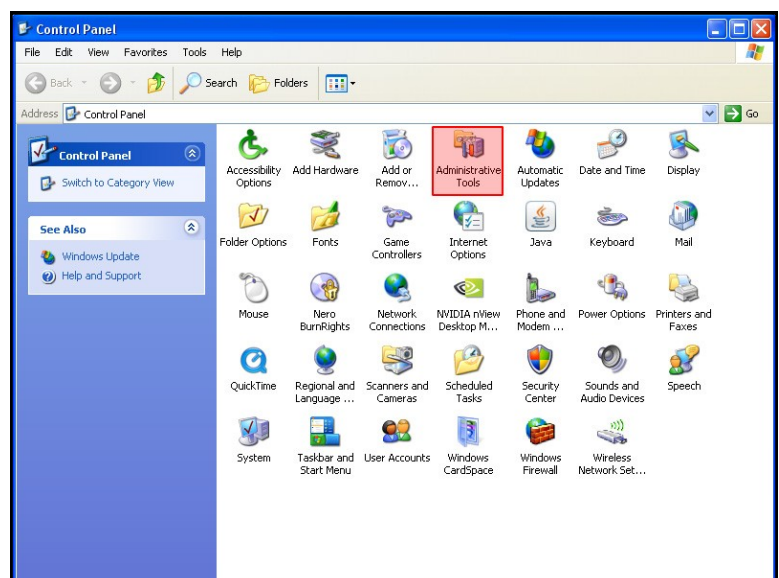
On the left-hand side you should see a **Switch to Classic View** link. Click on it.

If you don't see this link or you see the **Switch to Category View** link then you are already in the correct view.



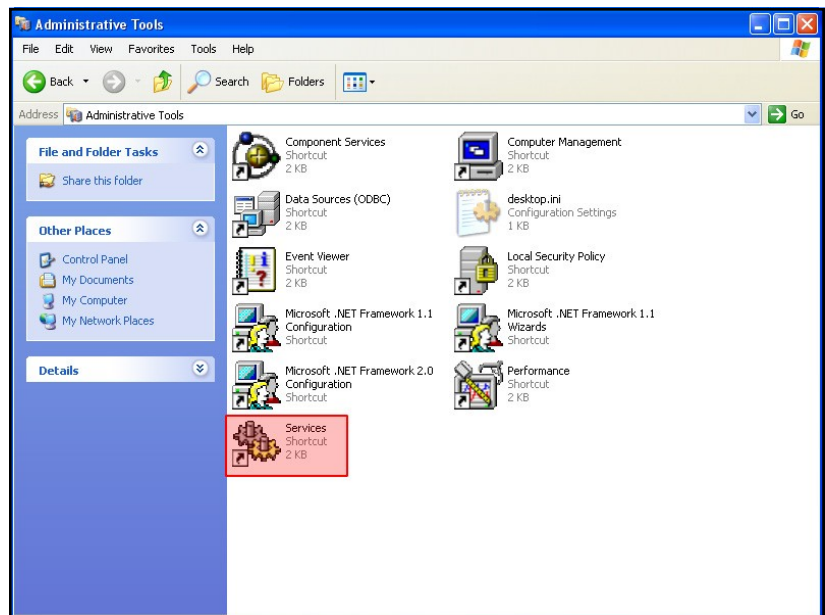
Step 3

Once in Classic View, double-click on the icon for **Administrative Tools**.



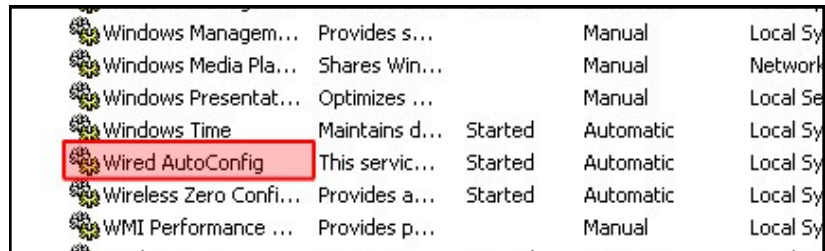
Step 4

Double-click on **Services**.



Step 5

Scroll down to **Wired AutoConfig** and double-click on it.

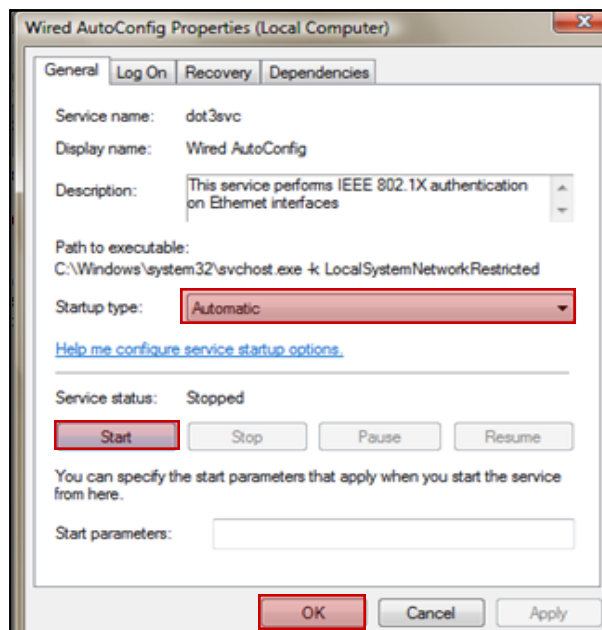


Step 6

In the Wired AutoConfig Properties window make sure that **Startup Type** is set to **Automatic**. Under **Service Status**: click the **Start** button. If you are able to click on the Stop or Restart buttons, then the service is already started.

Click **OK**.

You may now close out of all open windows.



Step 7

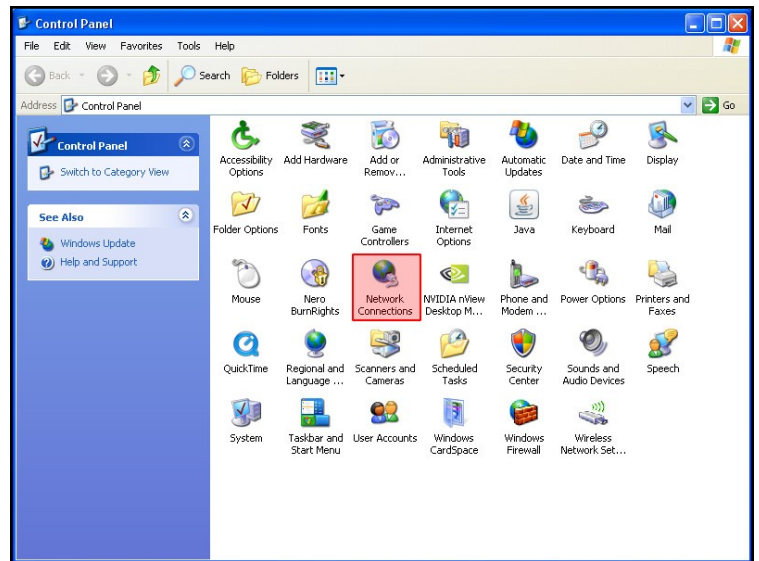
Click **Start**, and again select **Control Panel**.



Step 8

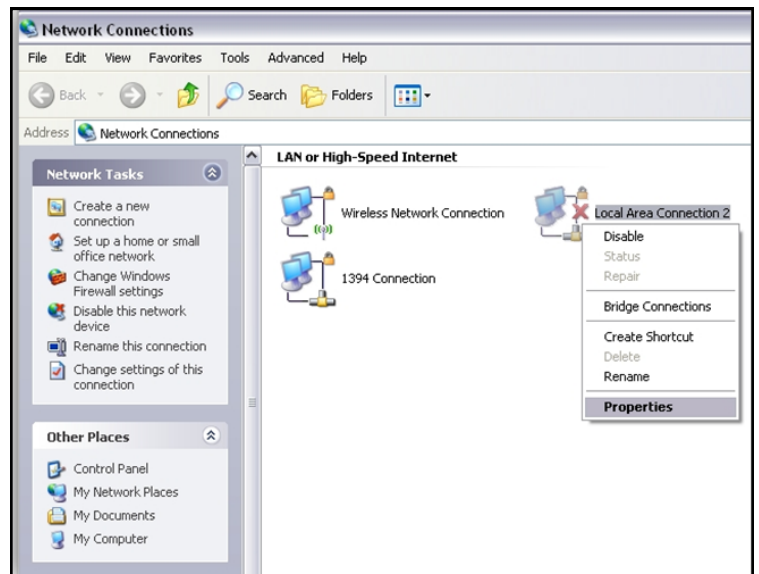
Double click on the icon for **Network Connections**.

***Note:** This icon will only appear in **Classic View**. For instructions on how to see your control panel in **Classic View**, see **Step 2**.



Step 9

Right-click on **Local Area Connection** and select **Properties**.



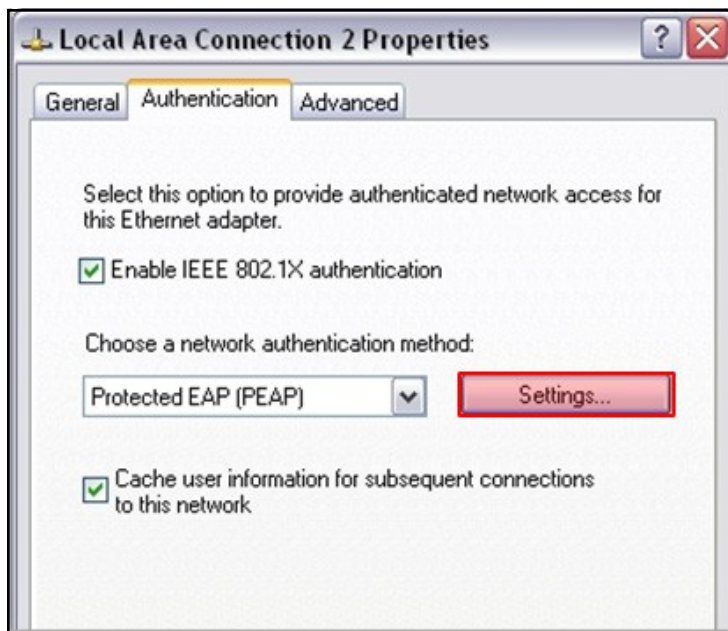
Step 10

Select the **Authentication** tab:

- Make sure **Enable IEEE 802.1X authentication** is checked.
- Under **Choose an authentication method:** make sure **Protected EAP (PEAP)** is selected.
- If you see: **Cache user information for subsequent connections to this network**, check this box.*
- Click **Settings...** (**Properties** on some computers.)

***Note:** Checking this box will cause the computer to save your username and password every time you connect.

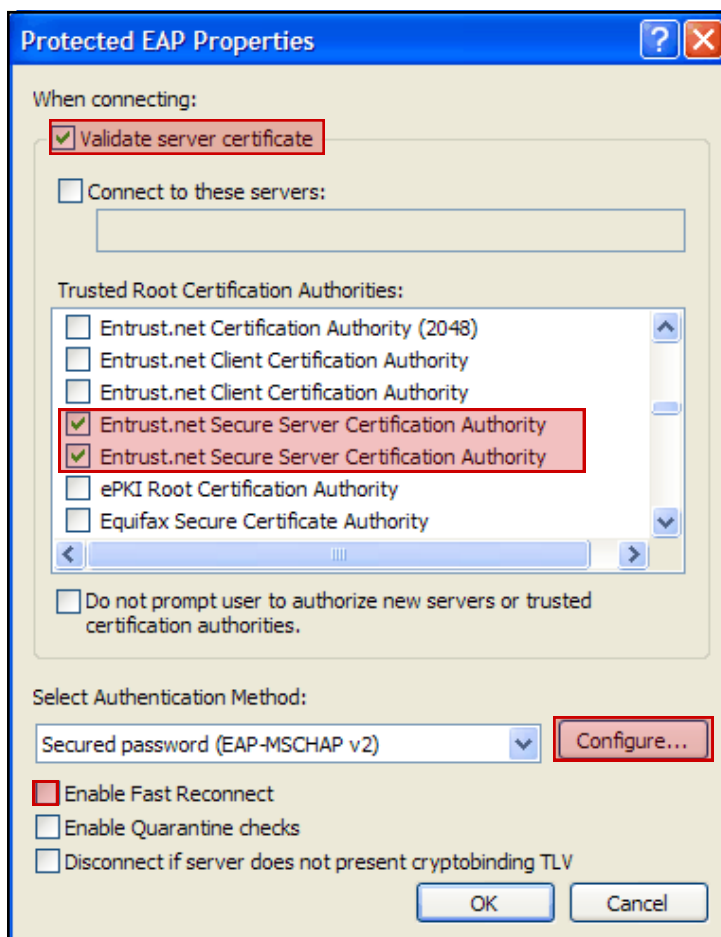
If you share your computer with other users you should not check this box.



Step 11

In the Protected EAP Properties Window:

- Check **Validate Server Certificate**.
- Under **Trusted Root Certification Authorities** choose **Entrust.net Secure Server Authority**. (If you see two instances of **Entrust.net Secure Server Authority**, check both boxes.)
- Under **Select Authentication Method** choose **Secured Password (EAP-MSCHAP v2)**.
- Uncheck: **Enable fast reconnect**.
- Click **Configure...**



Step 12

Uncheck: [Automatically use my Windows logon name and password](#), then click **OK**.

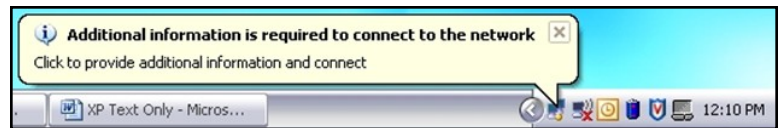
Click **OK** two more times and **close** the remaining Windows.



Step 13

A box will pop-up in the lower right portion of your screen requesting additional information - [Click on it](#). (It may take a minute or so for this box to appear.)

***Note:** If the box does not pop-up, try disconnecting your network cable for about 10 seconds and then plugging it back in.



Step 14

In the window that appears type in your [Bethel Username](#) and [Password](#). Click **OK**.

Your computer should now be connected to the Internet.



**If you need assistance with this process,
please call the ITS Student Services Help Desk at x6500 - Option 2.**