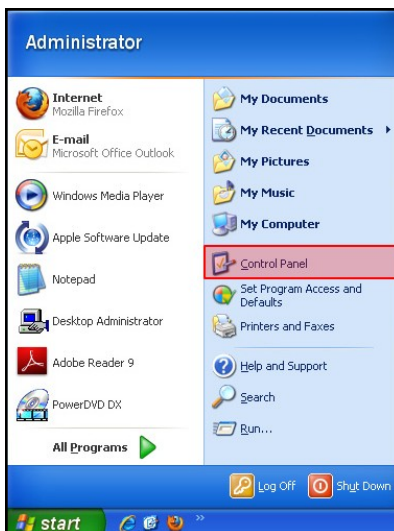


Windows XP: Setting Up a Secure Wireless Connection

Step 1

Click [Start](#) and select [Control Panel](#).



Step 2

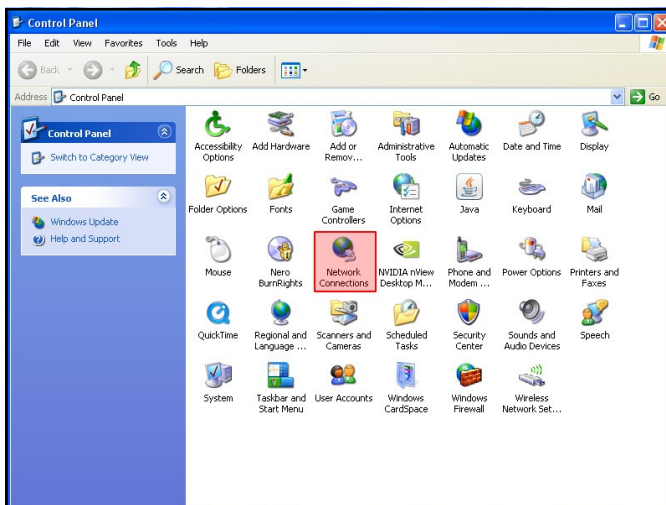
On the left-hand side you should see a [Switch to Classic View](#) link. Click on it.

If you don't see this link or you see the [Switch to Category View](#) link then you are already in the correct view.



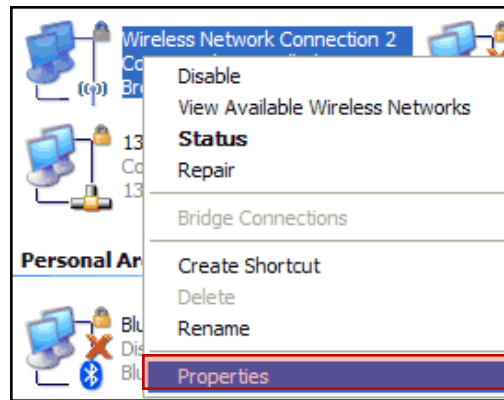
Step 3

Double click on the icon for [Network Connections](#).



Step 4

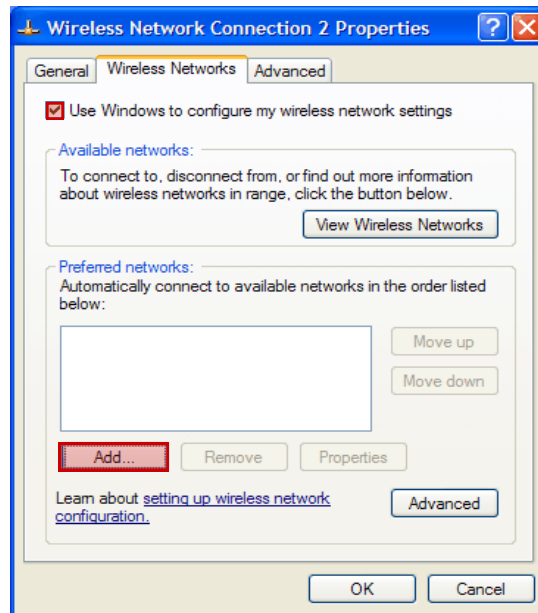
Right-click on **Wireless Network Connection** and select **Properties**.



Step 5

In the window that appears, select the **Wireless Networks** tab.

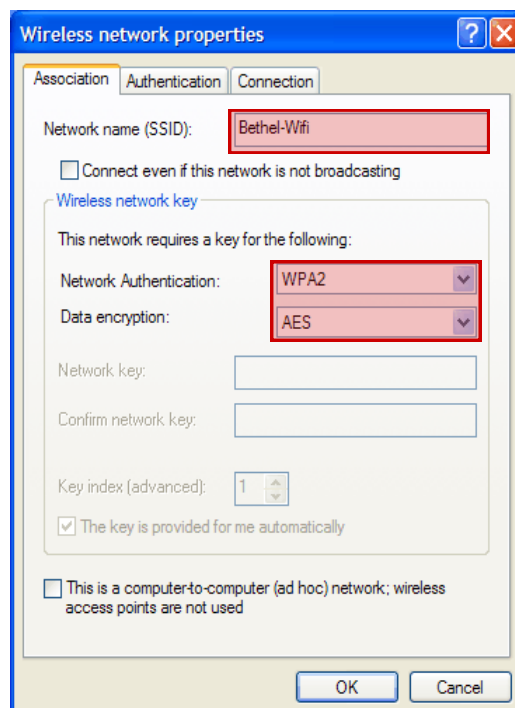
- A. Check **Use Windows to configure my wireless network settings**.
- B. Click the **Add...** button.



Step 6

On the **Association** tab, make the following changes:

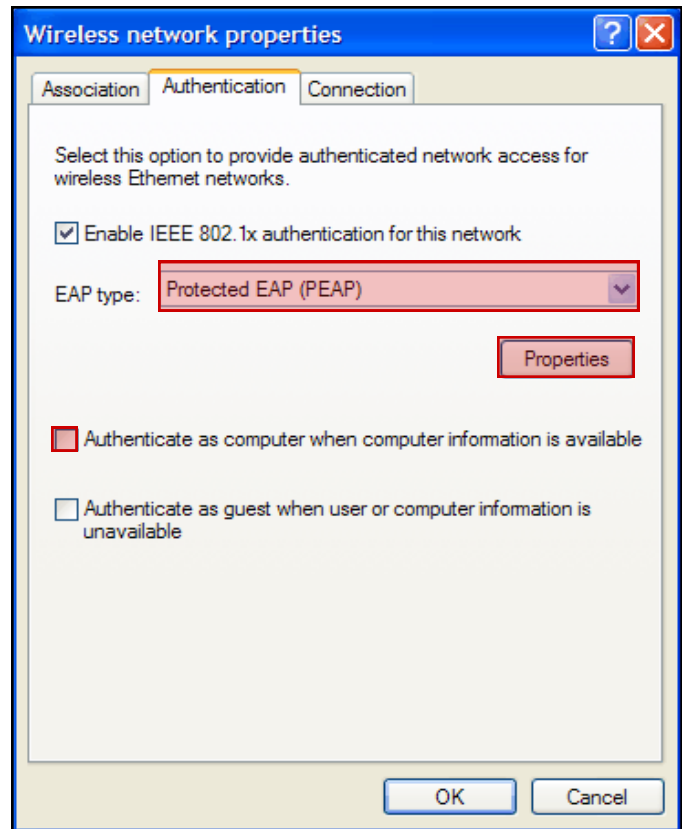
- A. Network name (SSID): **Bethel-Wifi**
- B. Network Authentication: **WPA2 Enterprise**
- C. Data encryption: **AES**



Step 7

On the [Authentication](#) tab, make the following changes:

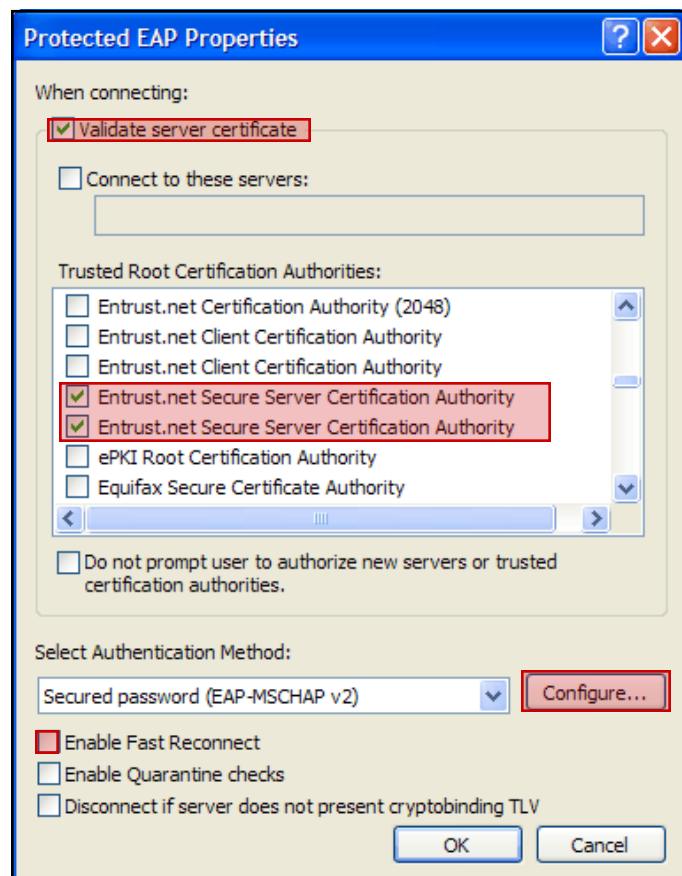
- EAP type: Select **Protected EAP (PEAP)** from the drop-down menu.
- Uncheck: [Authenticate as computer when computer information is available](#)
- Click on **Properties**



Step 8

In the window that appears, do the following:

- Under [Trusted Root Certification Authorities](#) choose **Entrust.net Secure Server Authority**. (If you see two of [Entrust.net Secure Server Authority](#), check both boxes.)
- Uncheck: [Enable Fast Reconnect](#)
- Select **Configure...**



Step 9

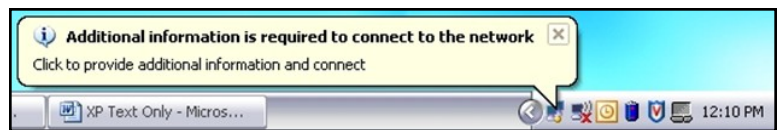
In the window that appears, uncheck:
[Automatically use my Windows logon name and password \(and domain if any\)](#).

Click **OK** four times to close all remaining open windows.



Step 10

A box will pop-up in the lower right portion of your screen requesting additional information - [click on it](#). (It may take a minute or so for this box to appear.)

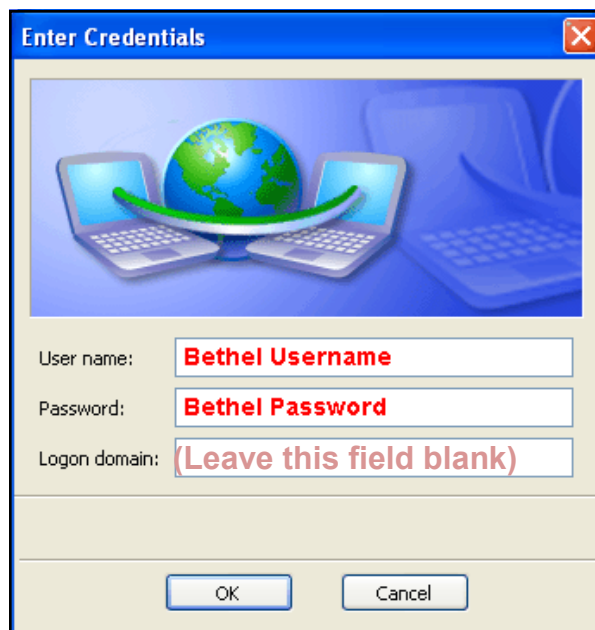


Step 11

In the window that appears type in your [Bethel Username](#) and [Password](#).

Click **OK**.

Your computer should now be connected to the Internet.



**If you need assistance with this process,
please call the ITS Student Services Help Desk at x6500 - Option 2.**