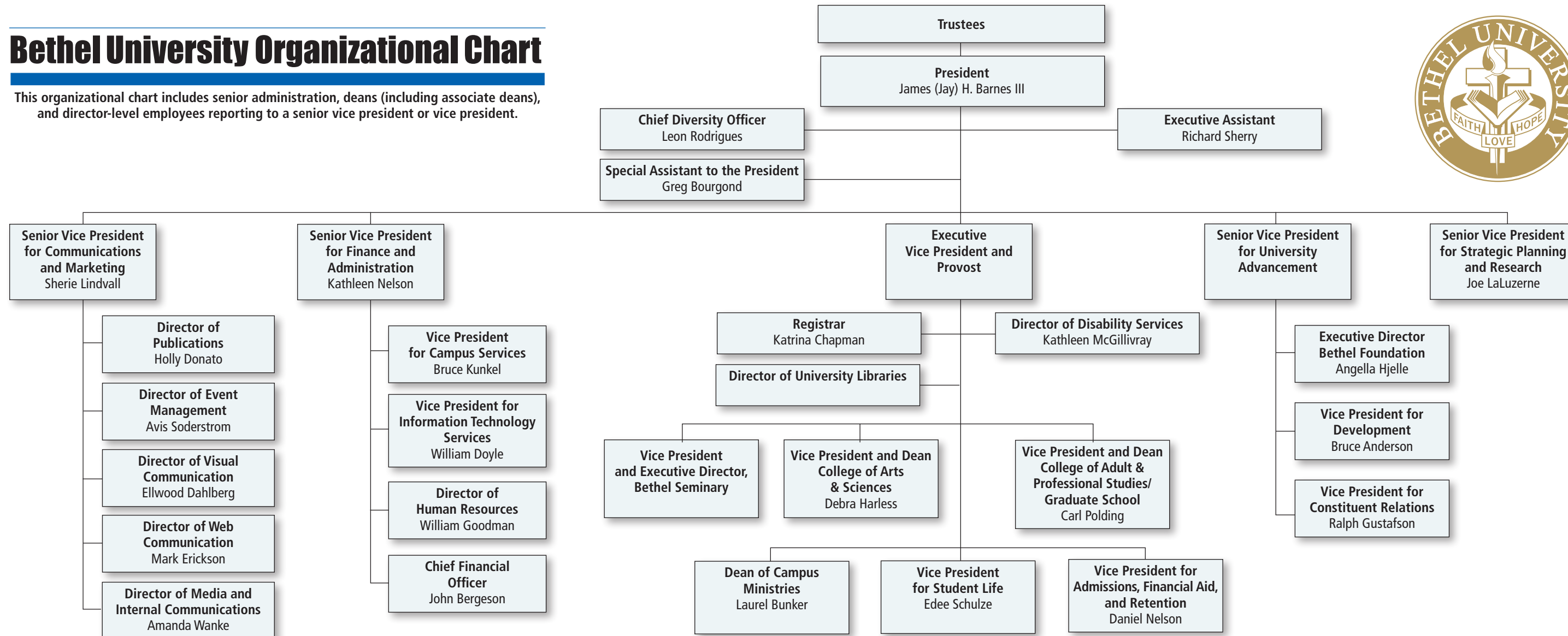


# Bethel University Organizational Chart

This organizational chart includes senior administration, deans (including associate deans), and director-level employees reporting to a senior vice president or vice president.



**TRUSTEES**—Dan Lindh, Chair  
**PRESIDENT**—James (Jay) H. Barnes III  
 EXECUTIVE ASSISTANT TO THE PRESIDENT—Rich Sherry  
 CHIEF DIVERSITY OFFICER—Leon Rodrigues  
**SENIOR VICE PRESIDENT FOR COMMUNICATIONS AND MARKETING**—Sherie Lindvall  
 DIRECTOR OF PUBLICATIONS—Holly Donato  
 DIRECTOR OF EVENT MANAGEMENT—Avis Soderstrom  
 DIRECTOR OF VISUAL COMMUNICATION—Ellwood Dahlberg  
 DIRECTOR OF WEB COMMUNICATION—Mark Erickson  
 DIRECTOR OF MEDIA RELATIONS AND INTERNAL COMMUNICATIONS—Amanda Wanke  
**SENIOR VICE PRESIDENT FOR FINANCE AND ADMINISTRATION**—Kathleen Nelson  
**VICE PRESIDENT FOR CAMPUS SERVICES**—Bruce Kunkel  
 DIRECTOR OF AUXILIARY SERVICES—Randy Hall  
 SODEXO GENERAL MANAGER FOR FOOD SERVICE—Bob Schuchardt  
 DIRECTOR OF FACILITIES MANAGEMENT—Thomas Trainor  
**VICE PRESIDENT FOR INFORMATION TECHNOLOGY SERVICES**—William Doyle  
 DIRECTOR OF INFORMATION SERVICES—Barb Smith  
 LEAD FACULTY INSTRUCTIONAL TECHNOLOGY CONSULTANT—Robert Kistler  
 DIRECTOR OF NETWORK SERVICES—Douglas Olson  
 DIRECTOR OF SYSTEMS ADMINISTRATION—Alain Swanson  
 DIRECTOR OF USER SERVICES—Douglas Nguyen  
 DIRECTOR OF TELECOMMUNICATIONS—William Buchanan  
 DIRECTOR OF WEB TECHNOLOGY—Mike Vedders  
 DIRECTOR OF HUMAN RESOURCES—William Goodman  
 CHIEF FINANCIAL OFFICER—John Bergeson

**EXECUTIVE VICE PRESIDENT AND PROVOST**—TBA  
 REGISTRAR—Katrina Chapman  
 DIRECTOR OF DISABILITY SERVICES—Kathleen McGillivray  
 DIRECTOR OF UNIVERSITY LIBRARIES—TBA  
**VICE PRESIDENT AND EXECUTIVE DIRECTOR, BETHEL SEMINARY**—TBA  
 DEAN, BETHEL SEMINARY ST. PAUL—David Ridder  
 DEAN AND EXECUTIVE OFFICER, BETHEL SEMINARY SAN DIEGO—John Lillis  
 DEAN AND EXECUTIVE OFFICER, BETHEL SEMINARY OF THE EAST—Douglas Fombelle  
**VICE PRESIDENT AND DEAN, COLLEGE OF ARTS & SCIENCES**—Debra Harless  
 ASSOCIATE DEAN OF ARTS AND HUMANITIES—Barrett Fisher  
 ASSOCIATE DEAN OF GENERAL EDUCATION AND FACULTY DEVELOPMENT—Deborah Sullivan-Trainor  
 ASSOCIATE DEAN OF OFF-CAMPUS PROGRAMS—Vincent Peters  
 ASSOCIATE DEAN OF NATURAL AND BEHAVIORAL SCIENCES—Jeff Port (Acting)  
 ASSOCIATE DEAN OF INSTITUTIONAL ASSESSMENT AND ACCREDITATION—Joel Frederickson (Acting)  
 ASSOCIATE DEAN FOR THE FACULTY—Kathy Nevins (Acting)  
**VICE PRESIDENT AND DEAN, COLLEGE OF ADULT & PROFESSIONAL STUDIES/GRADUATE SCHOOL**—Carl Polding  
 ASSOCIATE DEAN OF ACADEMIC AFFAIRS—Lori Jass  
 DIRECTOR OF STUDENT SERVICES—Ron Asmus  
 DIRECTOR OF FINANCE AND REGIONAL DEVELOPMENT—Aaron Buzay  
 DIRECTOR OF ADMINISTRATION—Carol Nissen  
**DEAN OF CAMPUS MINISTRIES**—Laurel Bunker

**VICE PRESIDENT FOR STUDENT LIFE**—Edee Schulze  
 DEAN OF STUDENTS—James Ferreira  
 DIRECTOR OF HEALTH SERVICES—Elizabeth Miller  
 DIRECTOR OF CAREER SERVICES—Kathlene Scholljegerdes  
 DIRECTOR OF COUNSELING SERVICES—James Koch  
 DIRECTOR OF ATHLETICS—Robert Bjorklund  
**VICE PRESIDENT FOR ADMISSIONS, FINANCIAL AID AND RETENTION**—Daniel Nelson  
 DIRECTOR OF FINANCIAL AID—Jeff Olson  
 DIRECTOR OF ADMISSIONS, COLLEGE OF ARTS & SCIENCES—Jay Fedje  
 DIRECTOR OF ADMISSIONS, COLLEGE OF ADULT & PROFESSIONAL STUDIES/GRADUATE SCHOOL—Michael Price  
 TRANSREGIONAL DIRECTOR OF SEMINARY ADMISSIONS AND RECRUITMENT—Joseph Dworak  
**SENIOR VICE PRESIDENT FOR UNIVERSITY ADVANCEMENT**—TBA  
**EXECUTIVE DIRECTOR BETHEL FOUNDATION**—Angella Hjelle  
**VICE PRESIDENT FOR DEVELOPMENT**—Bruce Anderson  
 ASSOCIATE VICE PRESIDENT FOR PLANNED GIVING—Dan Wiersum  
 ASSOCIATE VICE PRESIDENT FOR SEMINARY DEVELOPMENT—James Spickelmier  
 DIRECTOR OF CORPORATE AND FOUNDATION RELATIONS—Sandra Clark  
 DIRECTOR OF DEVELOPMENT SERVICES AND RESEARCH—Laura Hainlen  
 DIRECTOR OF ANNUAL GIVING—Christopher Nelson  
**VICE PRESIDENT FOR CONSTITUENT RELATIONS**—Ralph Gustafson  
 DIRECTOR OF ALUMNI AND PARENT SERVICES—Kara Swanson  
 DIRECTOR OF CHURCH MINISTRIES—TBA  
**SENIOR VICE PRESIDENT FOR STRATEGIC PLANNING AND RESEARCH**—Joe LaLuzerne