



# TAKE THE NEXT STEP

**YOUR 2018-2019 GUIDE  
TO COMPLETING YOUR  
ENROLLMENT CHECKLIST  
AND THE FINANCIAL  
AID PROCESS**



**BETHEL**  
UNIVERSITY



# IT'S TIME

**HERE'S WHAT YOU NEED TO DO NEXT  
TO FINALIZE YOUR FINANCIAL AID  
AND PREPARE FOR THE 2018-2019  
SCHOOL YEAR.**

## **Step 1:**

### **Complete Your Enrollment Checklist.**

It's important to check off everything on this list so you're ready to start Bethel by your first day of class. Your completed checklist is due before the beginning of fall or spring semester—August 15 or January 15.

## **Step 2:**

### **Finalize Your Financial Aid.**

There are a few actions you need to complete to finish the loan process.

## **Step 3:**

### **Pay Your Bill.**

Learn about your estimated bill, payment options, and scholarships.

## **YOUR FINANCIAL AID INFORMATION**

For additional details about everything in this guide and instructions on finding customized information about your financial aid, visit us online:

**[bethel.edu/my-award](https://bethel.edu/my-award).**

# Step 1:

## COMPLETE YOUR ENROLLMENT CHECKLIST

To find your enrollment checklist, log on to MyBethel ([my.bethel.edu](https://my.bethel.edu)). Under the Checklist tab you'll find the section titled Enrollment Checklist.

### 1 FINANCIAL AID REQUIREMENTS

Entrance Counseling: Required for federal direct student loans (see p.4).

MN State Grant Eligibility Questionnaire: Your answers will determine your initial eligibility for MN State Grant.

Verification: If your FAFSA was selected for verification, you'll need to complete verification before your financial aid will disburse.

FAFSA: Need-based grants and most loans require FAFSA.

### 2 COURSE REGISTRATION

Final High School Transcript: New students need to submit their final high school transcripts.

Previous College Transcript: Please submit the transcript for each college you've attended.

Academic Registration Form: Based on how you complete this form, expert faculty will register you for classes.

Placement Exams: These may be required to make sure you're enrolled in the correct courses and prepared for your courses.

### 3 SCHOOL BILL AND PAYMENTS

Registered for Payment Plan: Choose a payment plan. For more information about payment plans see Step 3 (p. 5).

First Payment Made: This is marked complete when families on payment plans make their first payment.

## 4 IMPORTANT THINGS

**My Profile:** Please submit the requested information.

**Payment Agreement:** Sign this online form regarding payment information.

**Apply for Housing:** Complete this process to let us know you're going to live on campus.

**Room Selection:** This process will help you find out where you'll be living.

**Sexual Misconduct Training:** Complete this required training for all students.

**Racial and Ethnic Harassment Training:** This training is also required for all students.

**Health Insurance Requirement:** Please submit your health insurance information.

**Immunization Records:** Please submit your immunization records.

## ENROLLMENT CHECKLIST SAMPLE

### Enrollment Checklist

#### 1 Financial Aid Requirements

##### Academic Year 2018-19

- ☐ Direct Loan Entrance Counseling
- ☐ MN State Grant Eligibility Questionnaire
- ☐ Verification Form—Dependent 2018-19
- ☐ FAFSA (use school code 002330)

**FAFSA Code: 005555** | [Financial Aid Website](#)

[Financial Aid Award](#)

#### Important Things

- ☐ My Profile (Available after Feb. 28, 2018)
- ☐ Payment Agreement (Available after July 5, 2018)
- ☐ Apply for Housing
- ☐ Room Selection (Available after June 18, 2018)
- ☐ Sexual Misconduct (Available after Feb. 28, 2018)
- ☐ Racial and Ethnic Harassment (Available after Feb. 28, 2018)
- ☐ Health Insurance Requirement (Available after Feb. 28, 2018)
- ☐ Immunization Records

#### 2 Course Registration

- ☐ Final High School Transcript (Available after Feb. 28, 2018)
- ☐ Academic Information Registration Form (Available after Feb. 28, 2018)
- ☐ Math Placement (Available after Feb. 28, 2018)

#### 3 School Bill and Payments

- ☐ School Bill Satisfied (Available after July 5, 2018)
- ☐ Registered for Payment Plan (Available after July 5, 2018)
- ☐ First Payment Made (Available after July 5, 2018)

*Your enrollment checklist may look different—it's customized for you.*

# Step 2:

## IF YOUR FINANCIAL AID AWARD INCLUDES LOANS, THERE ARE THREE STEPS YOU NEED TO TAKE.

### 1. COMPARE YOUR LOAN OPTIONS

The types of loans you may qualify for include Direct Subsidized Loans, Direct Unsubsidized Loans, Direct Parent PLUS loans, and Private Loans. You can compare these loans using our chart online:

**[bethel.edu/my-award](https://bethel.edu/my-award).**

### 2. ACCEPT YOUR LOANS

When you know which loan(s) you would like to borrow, you'll need to accept or decline them in MyBethel (Checklist tab > Financial Aid Award channel > Accept Award).

If you accept Direct Subsidized or Unsubsidized Loans as a new Bethel borrower, you must complete entrance counseling and the master promissory note (MPN) at **[studentloans.gov](https://studentloans.gov)**.

Accepting PLUS or Private Loan eligibility lets the Office of Financial Aid know that either your parent will apply for a PLUS loan (through [www.studentloans.gov](https://www.studentloans.gov)) or you'll apply for a private loan (separate application). There is a separate application process for these loans that can take up to 30 days.

*Apply for loans by the July 1 priority deadline to ensure your loans are processed by the time your bill is due. All loan funds will be disbursed directly into your Bethel student account.*

### 3. DECLINE YOUR LOANS

You can choose not to borrow all or a portion of your loans by declining your loans through MyBethel (Checklist tab > Financial Aid Award channel).



# Step 3:

## YOU HAVE TWO PAYMENT PLAN OPTIONS AND SEVERAL WAYS TO FUND THE BALANCE OF YOUR BILL AFTER YOUR FINANCIAL AID HAS BEEN APPLIED.

### PAYMENT PLAN OPTIONS

If you choose to pay in full, due dates are as follows:

- Fall semester—August 15
- Interim/Spring semester—January 15

If you choose to pay monthly, your first payment is due on the dates above. The monthly payment will then be due on the 15th of every month, with the last payment due in December or May of the fall and spring semesters.

Enroll in a payment plan or make the full payment using the link on your Enrollment Checklist.

### SCHOLARSHIPS AND GRANTS

Consider additional scholarships and grants to help fund your costs. Check our website for information about our church partnership scholarship, TEACH grant, and private scholarships:  
**[bethel.edu/my-award](https://bethel.edu/my-award).**

### STUDENT EMPLOYMENT

Student employment can be a great way to cover books or personal expenses. If you are a new student and student employment is part of your financial aid award, we give you priority placement for an on-campus job when you submit an application by May 15. If you miss the deadline or are a returning student, you can search for an on-campus job online. Find more information at:  
**[bethel.edu/my-award](https://bethel.edu/my-award).**

### ESTIMATED BILL

The estimated bill can help you determine how much you will owe each semester. Your estimated bill contains an estimate of future charges and sometimes actual charges. You can identify estimated charges by the (est.) next to them.

To view your estimated bill, go to MyBethel > Statements and Finances channel > View Estimated Bill.

## ADDITIONAL INFORMATION

There are a couple more pieces of information about financial aid that we would like you to know.

### SIGN-UP FOR PROXY

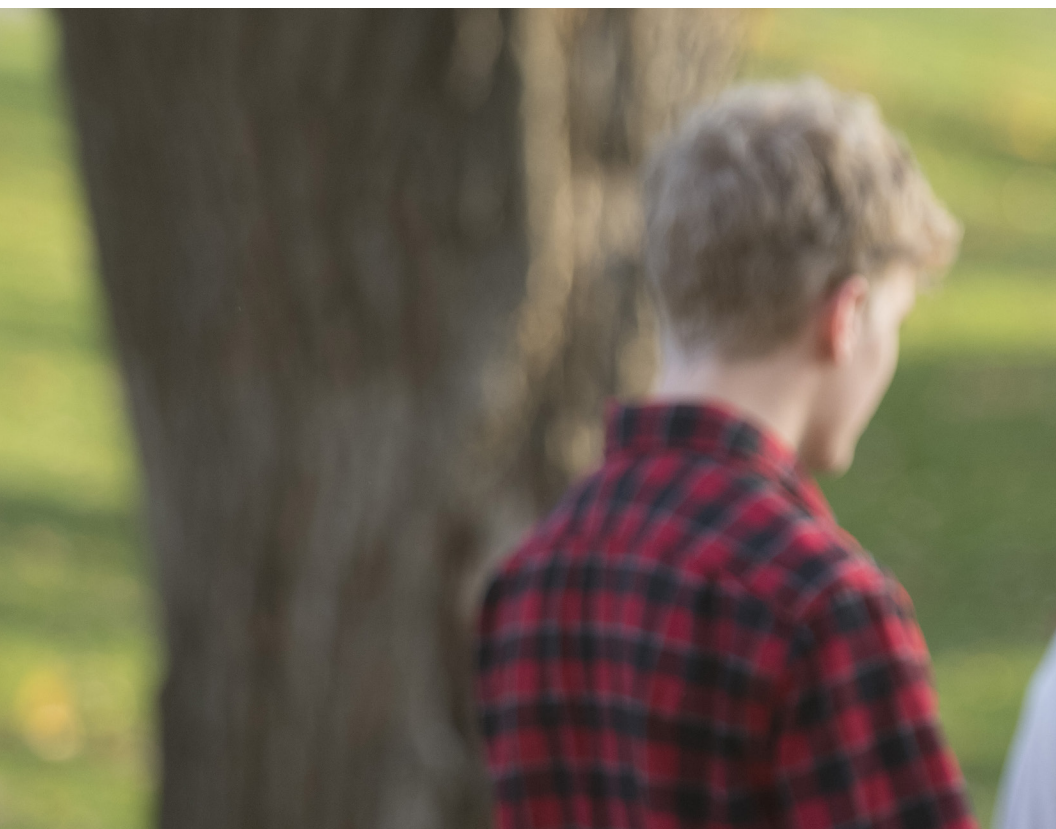
Set up proxy access if you would like your parents, spouse, or other third party to view and discuss your education records, including financial aid. Information on how to signup is available online: [\*\*bethel.edu/my-award\*\*](https://bethel.edu/my-award).

### FINANCIAL AID SATISFACTORY ACADEMIC PROGRESS POLICY (FA-SAP)

Bethel monitors student achievement through the FA-SAP policy and an Academic Progress, Probation, and Dismissal process. Failing to meet FA-SAP standards may result in lost eligibility for federal, state, and institutional financial aid. Find more information online: [\*\*bethel.edu/my-award\*\*](https://bethel.edu/my-award).

### MINNESOTA STATE GRANT

If you were awarded the MN State grant, please remember that the amount is based on the number of credits you take each semester. Your grant may change if the number of credits you take differs from what was noted on your award letter. Find more information online: [\*\*bethel.edu/my-award\*\*](https://bethel.edu/my-award).





# 2018-2019 Tuition and Costs

**THE FOLLOWING APPLIES TO FULL-TIME STUDENTS ATTENDING THE FALL AND SPRING SEMESTERS OF THE 2018-2019 SCHOOL YEAR.**

<b>TUITION:</b>	<b>\$37,140</b>
<b>ROOM:</b>	<b>\$5,830</b>
<b>MEAL PLAN:</b>	<b>\$4,690</b>
<b>STUDENT ACTIVITY FEE:</b>	<b>\$160</b>
<b>TOTAL:</b>	<b>\$47,820</b>

For information about interim, summer, part-time student tuition, and additional costs, please visit our financial aid website:

**[bethel.edu/undergrad/financial-aid/tuition](http://bethel.edu/undergrad/financial-aid/tuition).**



# Important Deadlines

## **STAY ON TOP OF YOUR FINANCIAL AID AWARD.**

**If you're starting Bethel in Fall 2018, here are your important deadlines:**

Apply for student employment	May 15
Apply for private or PLUS loans	July 1 (Priority Deadline)
Complete the verification process	July 1 (Priority Deadline)
Complete your Enrollment Checklist	August 15
First monthly bill or full payment for fall semester	August 15

**If you're starting Bethel in Spring 2019, here are your important deadlines:**

Complete your Enrollment Checklist	January 15.
First monthly bill or full payment for spring semester	January 15
Complete loans and verification	December 1 (Priority Deadline)

More important dates and deadlines are available online:  
**[bethel.edu/my-award](http://bethel.edu/my-award).**

## **QUESTIONS?**

If you have any questions, please let us know.  
We're here to help.

Office of Financial Aid  
651.638.6241  
[finaid@bethel.edu](mailto:finaid@bethel.edu)







# BETHEL

UNIVERSITY

**Office of Financial Aid**

Bethel University

3900 Bethel Drive, St. Paul, MN 55112

651.638.6241 | Fax: 651.635.1491

[finaid@bethel.edu](mailto:finaid@bethel.edu)