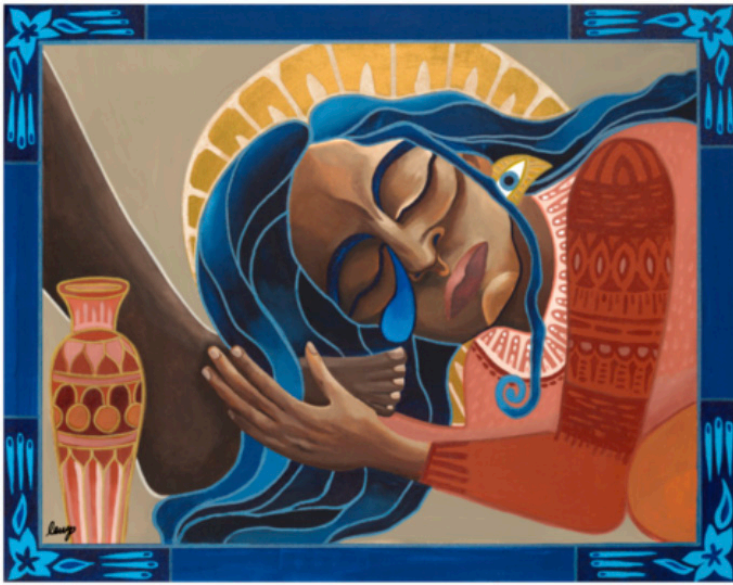


come and see

Week 9: What a...Waste?

John 12: 1-11



Anointed Print (Mary Washes Jesus' Feet) by Lauren Wright Pittman

Summary

In John 12:1-11, Jesus visits Bethany, where Mary anoints His feet with expensive perfume, signifying her devotion and serving as an anointing (many biblical scholars see this as an affirmation of Jesus being the expected Messiah). Judas Iscariot criticizes her for wasting money, but Jesus defends her, highlighting the importance of honoring Him. This passage reflects themes of sacrifice, worship, and the tension between materialism and spiritual devotion. As followers of Jesus, we are challenged to consider how we prioritize our resources and express our devotion.

REFLECTION QUESTIONS:

For you

1. What sacrificial acts of devotion can I offer to Jesus in my daily life?
2. How do I respond to criticism when I choose to prioritize my faith—maybe in ways that others find “excessive”?
3. A Spiritual Practice to try: Breath Prayers
 - a. Sit quietly and comfortably. Start by praying for God to lead you and guide you.
 - b. Close your eyes and breathe deeply and slowly.
 - c. With each inhale breath, pray “Spirit of the Christ.”
 - d. With each exhale breath, pray “Bring me back to life...”
 - e. Rest in the presence of the all-loving God. Stay open to the Holy Spirit’s guidance.
 - f. After a while, simply end by telling God “thank you” for his ability to revive.

For your work

1. As a team or as co-workers, how can we identify and prioritize acts of service and devotion in our work that reflect our values and mission? Challenge each other to be practical and to truly brainstorm—lifting limits in order to spur creativity and discover counter-cultural ways to serve Christ together.
2. What are some challenges we face in balancing our professional responsibilities with our spiritual commitments, and how can we address them together?
3. How can we—as co-workers, teammates, supervisors/supervised—fostering a supportive environment for addressing any challenges that might come up?

continued below...

For students (questions to have in your ‘back pocket’)

1. Mary expressed her devotion to Jesus by anointing his feet with perfume. What does sacrificial love look like for you in your life?
2. How do we navigate the tension between societal expectations and our commitment to following Jesus, particularly in our choices and priorities?
3. What steps can we take at Bethel to create a community that supports spiritual growth and encourages acts of worship and devotion among our peers?

How is this resource working for you? How is God using it to form you? Are there ways we can improve it? How can we pray for you? If you’ve got questions or thoughts, we invite you to be in touch with us. Send us an email at campus-ministries@bethel.edu

[click here for the week 9 discovery bible study](#)



BETHEL
UNIVERSITY

Campus
Ministries