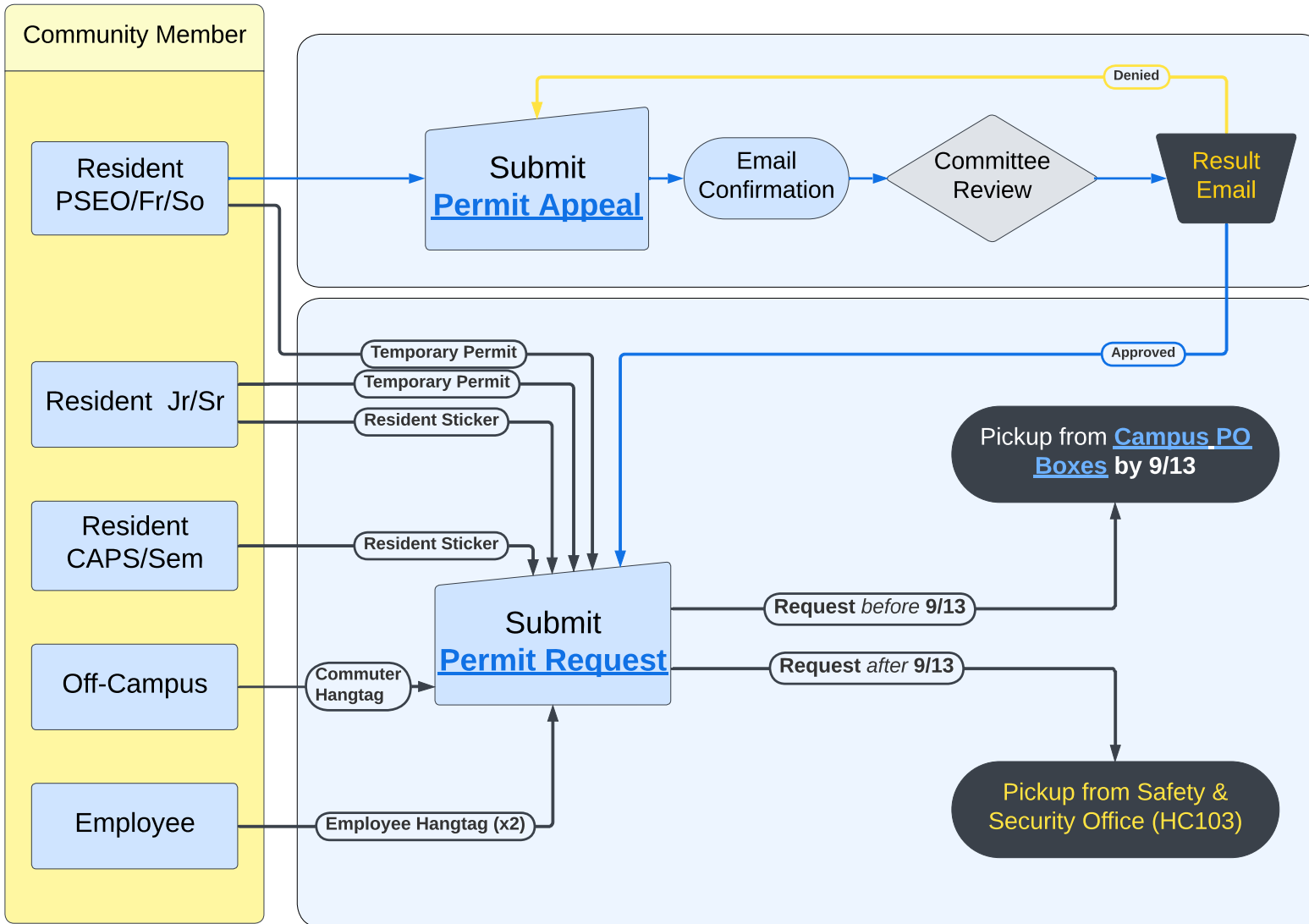


Parking Permit Appeal/Request Process



Class Standings based on **completed credits** at time of appeal



BETHEL
UNIVERSITY

Safety & Security

FAQ's

The Parking Appeals Committee endeavors to review and process appeals received prior to August 17th before [Welcome Week](#). Appeals received after August 17th will be reviewed on an as-needed basis.

Permit Requests from Resident Fr/So who have not received permit approval will be cancelled. Requestors will be redirected to submit a permit appeal.

Permits and Appeals are issued on an annual basis. Charges are assessed to student accounts on a per-semester basis to best match other university systems.

Fall '26 Permit Requirements will be enforced starting **Monday, September 13th**.

More Info:

- [Motor Vehicle Regulations](#)
- [Permit & Citation Fees](#)

Contact Us:

safety-security@bethel.edu
Hagstrom Center 103
651.638.6000