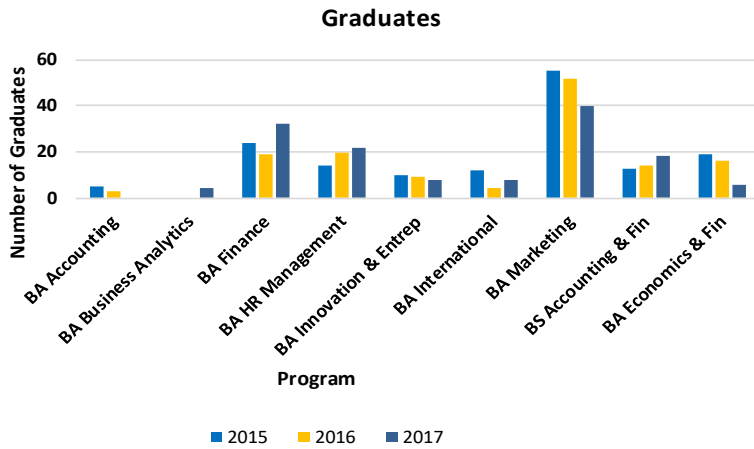


# Bethel Business & Economics Department

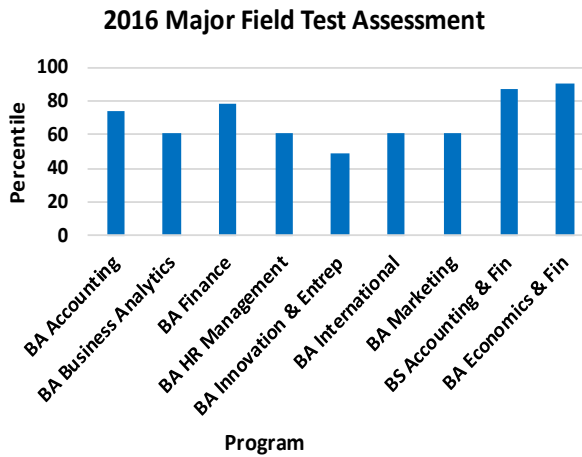
## College of Arts & Sciences

### Program Results

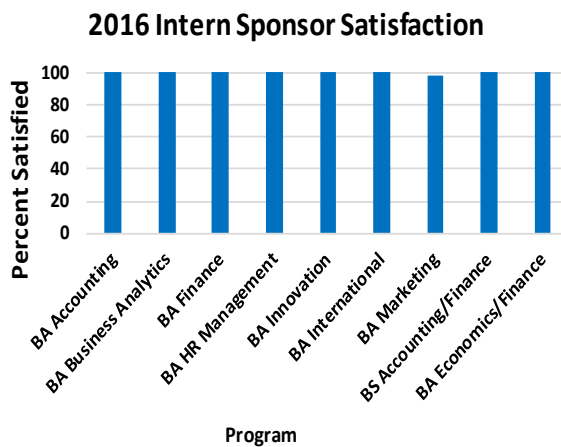
Accredited programs in the Business and Economics Department produces the largest number of graduates at Bethel University.



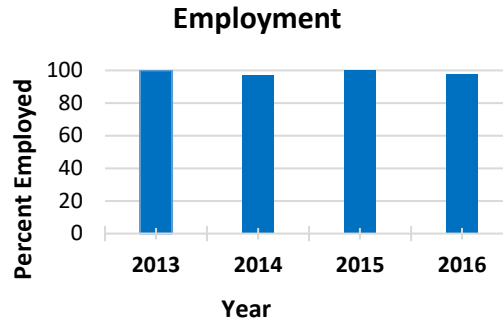
Major Field Test results, a comprehensive test of business knowledge, indicate Bethel graduating seniors by program are generally above the 50th percentile when compared with seniors from other colleges and universities.



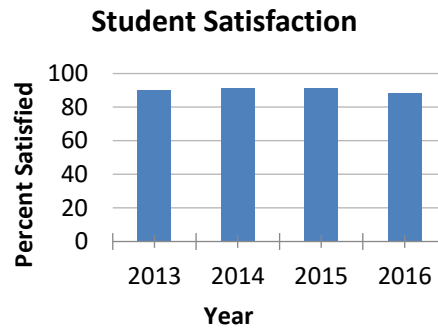
Internship sponsors reported nearly 100 percent satisfaction with student interns by program (Source: Bethel Internship Survey).



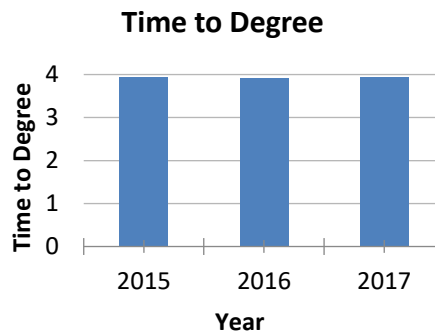
Alumni reported nearly 100 percent employment (or volunteer service/continuing education) one year after graduating from Bethel business programs over a four year period (Source: Bethel Alumni Survey).



Students reported nearly 90 percent overall satisfaction with educational experiences within their business major over a four year period (Source: Bethel Campus Life Survey).



Graduates of business programs complete their degree programs on average within four years.



Business student persistence rate is approaching 80 percent. Persistence is defined as completing a degree program or being still enrolled at Bethel after eight semesters of study.

