

Mac OS X 10.4: Setting Up a Secured Wired Connection

Step 1

On the Menu Bar click the **Airport** icon. From the drop-down menu, select **Open Internet Connect...**

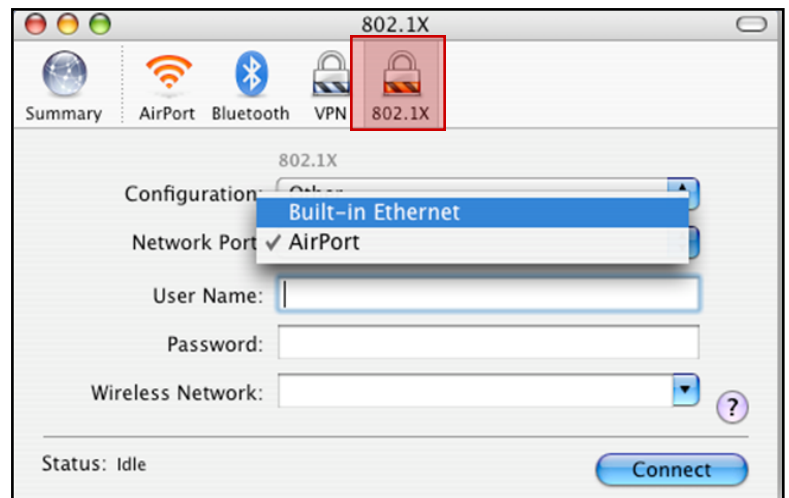


Step 2

Once you are in the Internet Connect window, press the key combination:

Command (Apple) + Shift + X

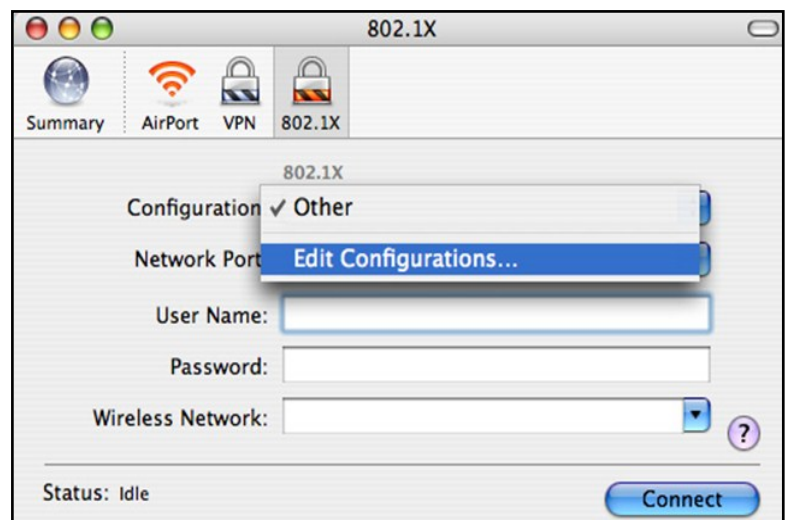
This key combination will create an **802.1X** tab. Select the **802.1X** tab if it does not open automatically.



Step 3

On the **802.1X** tab, click on the **Configuration** drop-down menu. Select **Edit Configurations...**

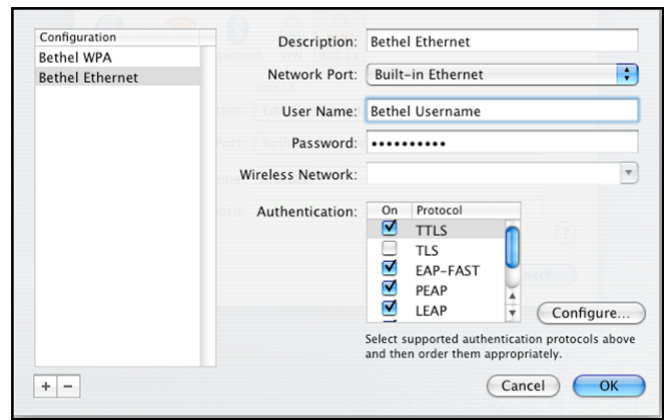
Enter a name for the Configuration (Ex. **Bethel Ethernet**).



Step 4

Configure the following fields with the information listed below.

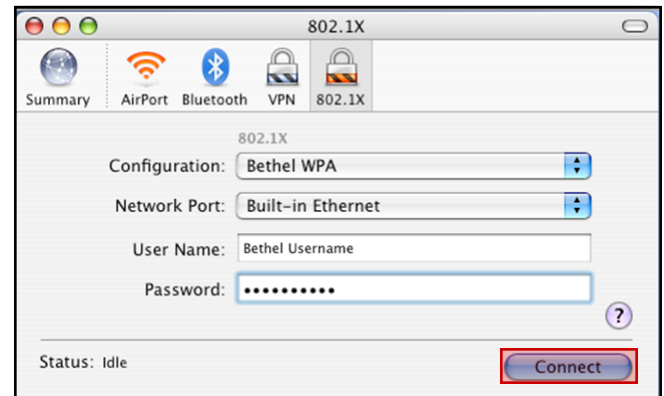
1. **Description:** Bethel Ethernet
2. **Network Port:** Make sure **Built-in Ethernet** is selected
3. **Username:** your Bethel username.
4. **Password:** your Bethel password.
5. **Authentication:** make sure the box next to **PEAP** is checked.
6. Click **OK**.



Step 5

Click the **Connect** button.

***Note:** Your computer may ask you if you want it to remember your username and password in your keychain. **If you share your computer with other users you should not check this option.**



Step 6

A window will then appear requesting a connection to the Secure Bethel network. During the request you will be prompted with a digital certificate. Click the **Show Certificate** button.



Step 7

A [Verify Certificate](#) window will now appear, showing the details of the certificate. Configure and verify the following fields as shown below.

1. Under the [Trust Settings](#) drop-down menu, select: **Always Trust**.
***Note:** This will allow you to trust the server's certificate in the future without being prompted.
2. Click the [Continue](#) button.

Your computer should now be connected to the Internet.

