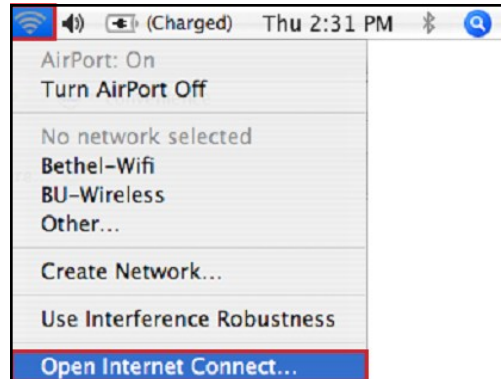


OS X 10.4: Setting Up a Secure Wireless Connection

Step 1

On the Menu Bar, click the **Airport** icon. From the drop-down menu, select **Open Internet Connect...**

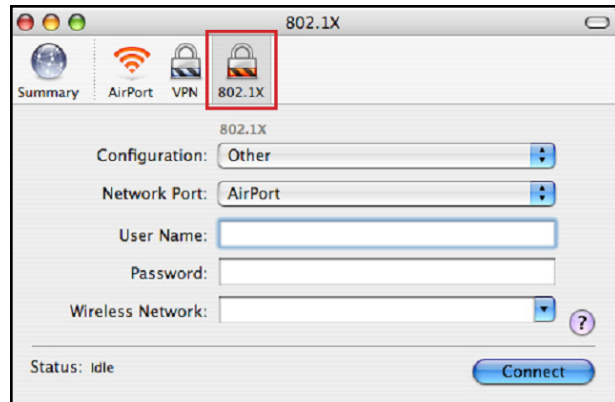


Step 2

In the **Internet Connect** window, press the key combination:

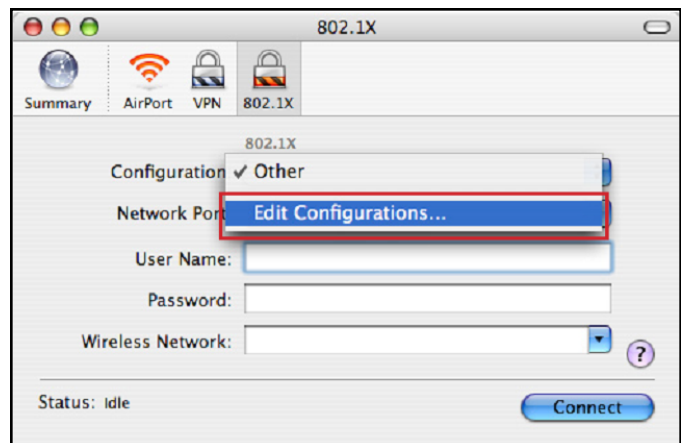
Command (Apple) + Shift + X

The key combination will create an **802.1X** tab in the **Internet Connect** window. Select the **802.1X** tab if it does open not automatically.



Step 3

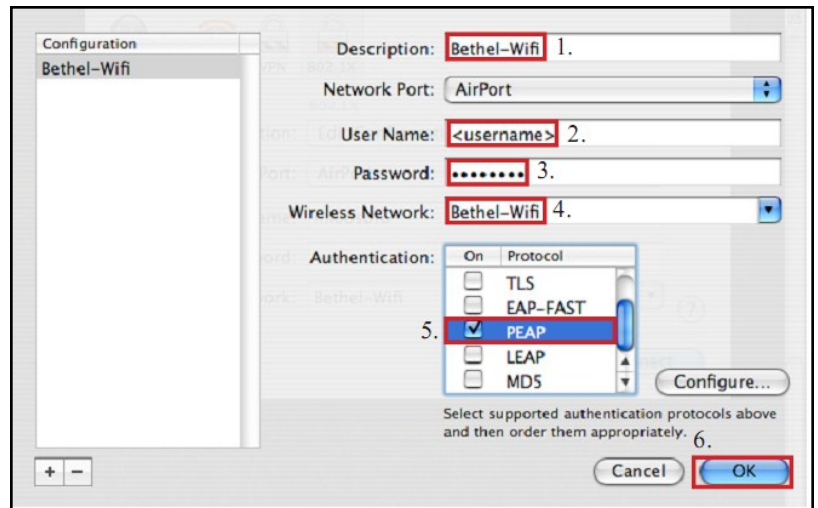
Once in the **802.1X** tab, click on the **Configuration** drop-down menu. Select **Edit Configurations...**



Step 4

Configure the following fields with the information listed below.

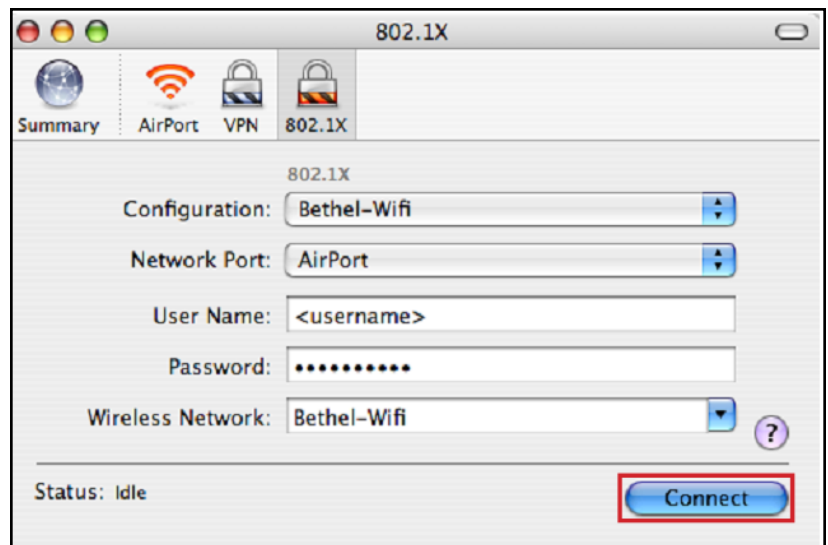
1. **Description:** Bethel-Wifi.
2. **Username:** Your Bethel username.
3. **Password:** Your Bethel password.
4. **Wireless Network:** Select **Bethel-Wifi** (or make sure it is selected).
5. **Authentication:** Make sure the checkbox next to *PEAP* is selected.
6. Click the **OK** button.



Step 5

Click the **Connect** button.

***Note:** Your computer may ask you if you want it to remember your username and password in your keychain. **If you share your computer with other users you should not check this option.**



Step 6

A window will then appear requesting a connection to the Secure Bethel network. During the request you will be prompted with a digital certificate. Click the **Show Certificate** button.



Step 7

A **Verify Certificate** window will now appear, showing the details of the certificate. Configure and verify the following fields as shown below.

1. Under the **Trust Settings** drop-down menu, select: **Always Trust**.
***Note:** This will allow you to trust the server's certificate in the future without being prompted.
2. Click the **Continue** button.

Your computer should now be connected to the Internet.

